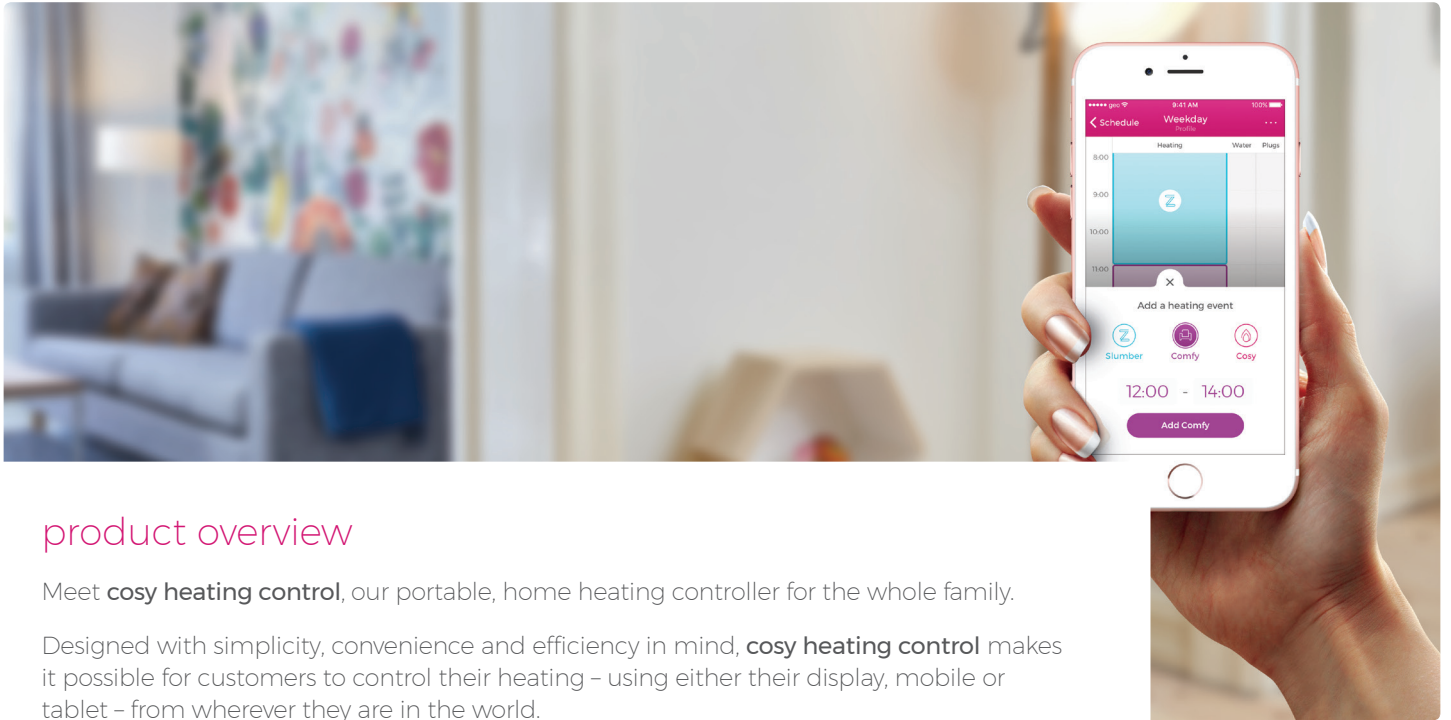


heating control

the simple, smart heating controller



product overview

Meet **cosy heating control**, our portable, home heating controller for the whole family.

Designed with simplicity, convenience and efficiency in mind, **cosy heating control** makes it possible for customers to control their heating – using either their display, mobile or tablet – from wherever they are in the world.

This eliminates the need for people to heat their homes when they're not there, ultimately helping them to save energy, money on their home heating bills, and the environment.

Since its launch back in 2014, our smart heating controls have been installed in tens of thousands of homes around the UK. But the work doesn't stop there - we're constantly innovating, updating and improving our **cosy** products and services.

facts & figures

- Energy bills are the number one financial concern for UK homeowners – more so than for other household bills and mortgages.¹
- 1 in 5 UK residents believe they spend more than £50 a year heating their homes when they don't need to.
- 1 in 3 Britons suffer from some form of thermal discomfort (either too hot or too cold) in their home.²
- 81% of those with smart home products already in their home state they would be more likely to buy a home if smart technology was already installed there.³

system components

- Display (portable)
- Mini hub (auto-pairs with all other system components)
- App (for iOS and Android)
- Switch (multi-purpose to control heating and/or hot water)
- Smart plugs



Display



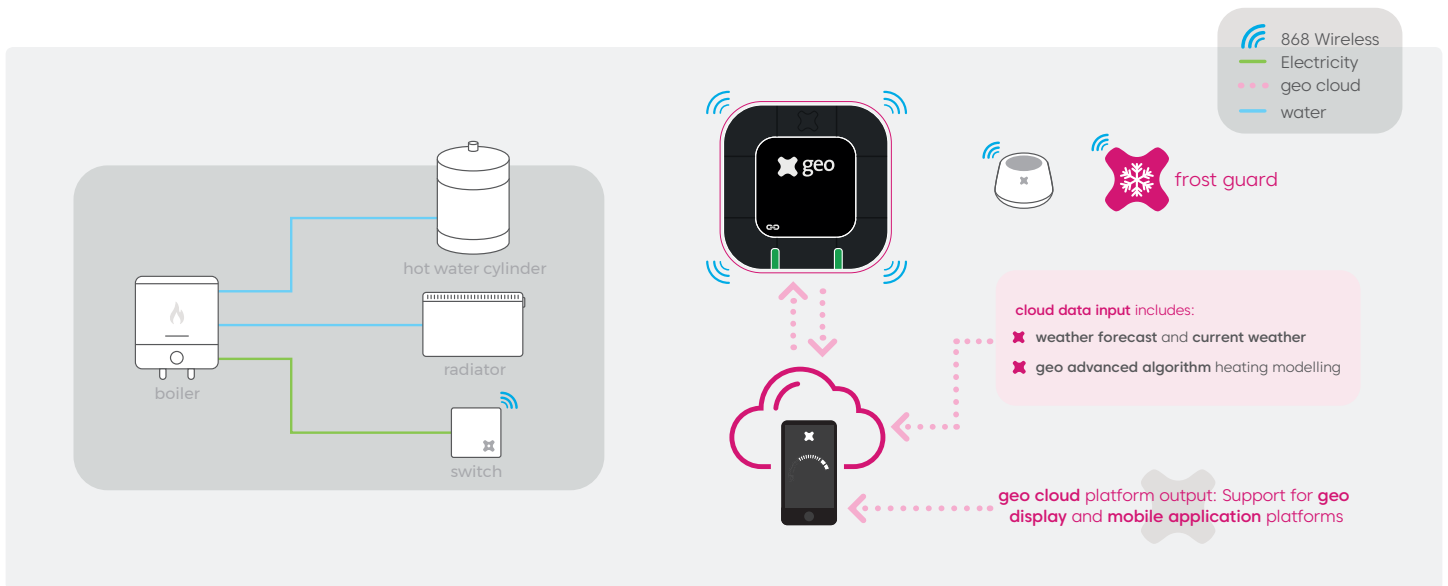
Hub



Switch



Smart plugs



key features and benefits

ease of installation

We recommend that **cosy heating control** is professionally installed. However, our auto-pairing hardware and new switch design (whereby purposing is decided via the app) means installers don't need to spend as long in the field.

hot water control

cosy heating control is able to control when a home's hot water turns on and off – either based on a schedule or selected as a one-off event.

multi-zone heating control

Homes with more than one zone can benefit from being able to control these areas individually. Each zone can be named and assigned different temperature set points. For homes with multiple zones we've introduced heating groups – meaning upstairs can be a different temperature to downstairs.

user-friendly app

We've made our app (for iOS and Android) easy to use for the whole family. The navigation, scheduling and temperature-setting processes are intuitive and graphical. There's also a help section and walk-through demos to help get users up and running. Additional support materials are also available online.

portable display

The **cosy heating control** display can be removed from its docking station so that users can make sure the temperature is right for them wherever they are in their home.

latest battery technology

The **cosy heating control** display has a lithium battery for improved charging and longer life. In-app battery low notifications help the user know when it's time to recharge – if display has been left off the dock.

multi-fuel compatibility

cosy heating control works with all heating systems that can be controlled by a thermostat – either wireless or wired – and is suitable for gas, LPG, oil, biomass and many electrical heating systems. This means it can be installed in most homes, irrespective of heating fuel or utility tariff.

Alexa voice control

“Alexa, ask Cosy to make it Comfy.” Thanks to our **cosy** skill for Amazon Echo, **cosy heating control** users can now control their heating and hot water using just their voice.

Welcome Home feature

Up to five **cosy** smart plugs can be connected to in-home appliances (e.g. lamps, pressure cooker) and be scheduled to turn on when the heating comes on - independently of the heating.

simple heating modes and schedules

Customers can choose from either Cosy, Comfy or Slumber mode and can create up to eight unique profiles to fit with their lifestyle. Leaving a home in Standby turns the heating off but protects pipes from frost.

Reference:

- ¹ YouGov UK (2015)
- ² geo (Smart Heating Survey, 2016)
- ³ CNET/Coldwell Banker (2015)