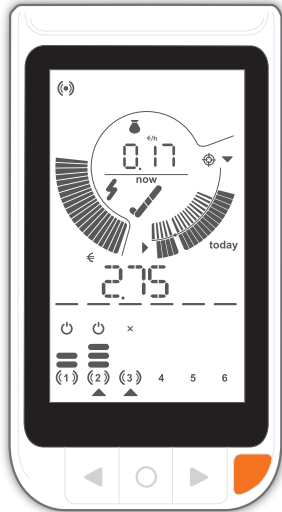


Ensemble | colour display

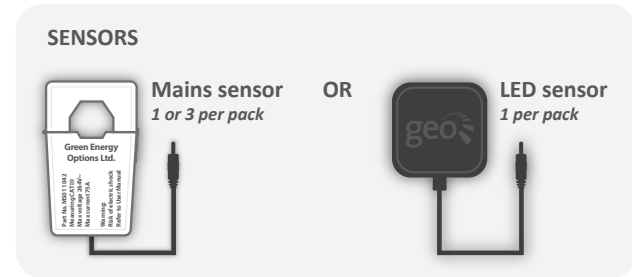
QUICK START GUIDE



DISPLAY
1 per pack



TRANSMITTER
1 per pack



for a simpler start, go to: energynote.co.uk/start

SAFETY FIRST



Your safety is very important to us. Please read the following guidelines **before** installation.

Sensors

Do not install the sensor if:

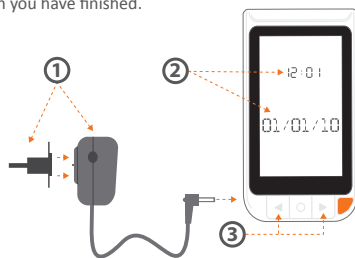
- There is not enough cable for the clip to connect correctly.
- The cable is too wide for the **sensor** (do not force the **sensor**).
- The cables appear perished (cracked, burned, bare copper is visible), loose or wet.
- You have any doubts about the condition of the cables/meter.

Display

- Follow all manufacturers guidelines when installing your **display**.
- Keep your **display** away from water/liquids.
- Always disconnect before cleaning (clean with a soft, dry cloth only).
- Contact your supplier if any of the components appear damaged/faulty.

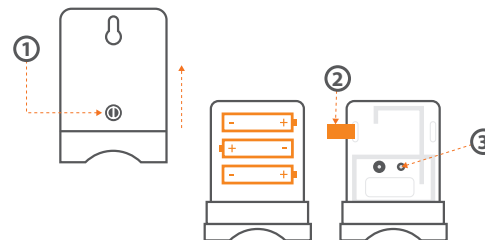
STEP 1 – DISPLAY

1. Insert and twist clockwise to clip the 2 pinned (EU) or 3 pinned (UK) plug to your power supply and connect it to your **display**. Your **display** will turn on automatically when you plug it into the mains supply.
2. Whenever the **display** is turned ON, you will see the 'set clock' screen.
3. Use the left and right buttons on the front of the **display** to adjust the time and date – then press the middle (set) button when you have finished.



STEP 2 – TRANSMITTER

1. Open the **transmitter** unit by pressing the button, and pulling the outer cover away from the bottom.
2. Remove the battery tab from the **transmitter**.
3. The red light will flash to show that the unit is working.
4. On the **display**, the lightning bolt icon will light to show that it is talking to the **transmitter**. If the lightning bolt icon on the **display** is flashing please refer to the online user manual.

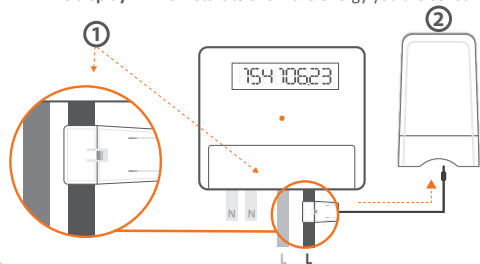


STEP 3 – SENSORS

For a single phase pack: (one mains sensor)

1. At your electricity meter, clip the **sensor** around the mains live cable (please refer to the online user manual for examples of live cables on the meter). You should hear a 'click' to indicate the **sensor** has been tightly closed.
2. Insert the other end of the **sensor** cable in to the socket in the bottom of the **transmitter** and ensure it is fully inserted.

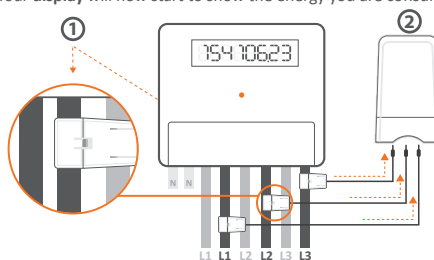
The **display** will now start to show the energy you are consuming.



For a three phase pack: (three mains sensors)

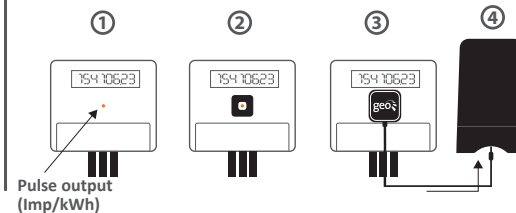
1. At your electricity meter, clip the **sensors** around the mains live cables (attach one **sensor** per cable, please refer to the online user manual for examples of live cables on the meter). You should hear a 'click' to indicate that the **sensors** have been securely fastened.
2. Insert the other end of the cable in to the socket in the bottom of the **transmitter** and ensure it is fully inserted.

Your **display** will now start to show the energy you are consuming.



For a LED sensor:

1. Find the pulse output on your meter.
2. Stick the square velcro around the pulse output on the meter.
3. Place the LED **sensor** over the square velcro on the meter ensuring that the GEO logo is facing you.
4. Insert the other end of the LED cable in to the socket in the bottom of the **transmitter** and ensure it is fully inserted.
5. Check the imp/kWh value on your meter, configure this on your display. Refer to the user manual for further information.



For any help please visit our online user manual at: www.greenenergyoptions.co.uk/ensemble-colour